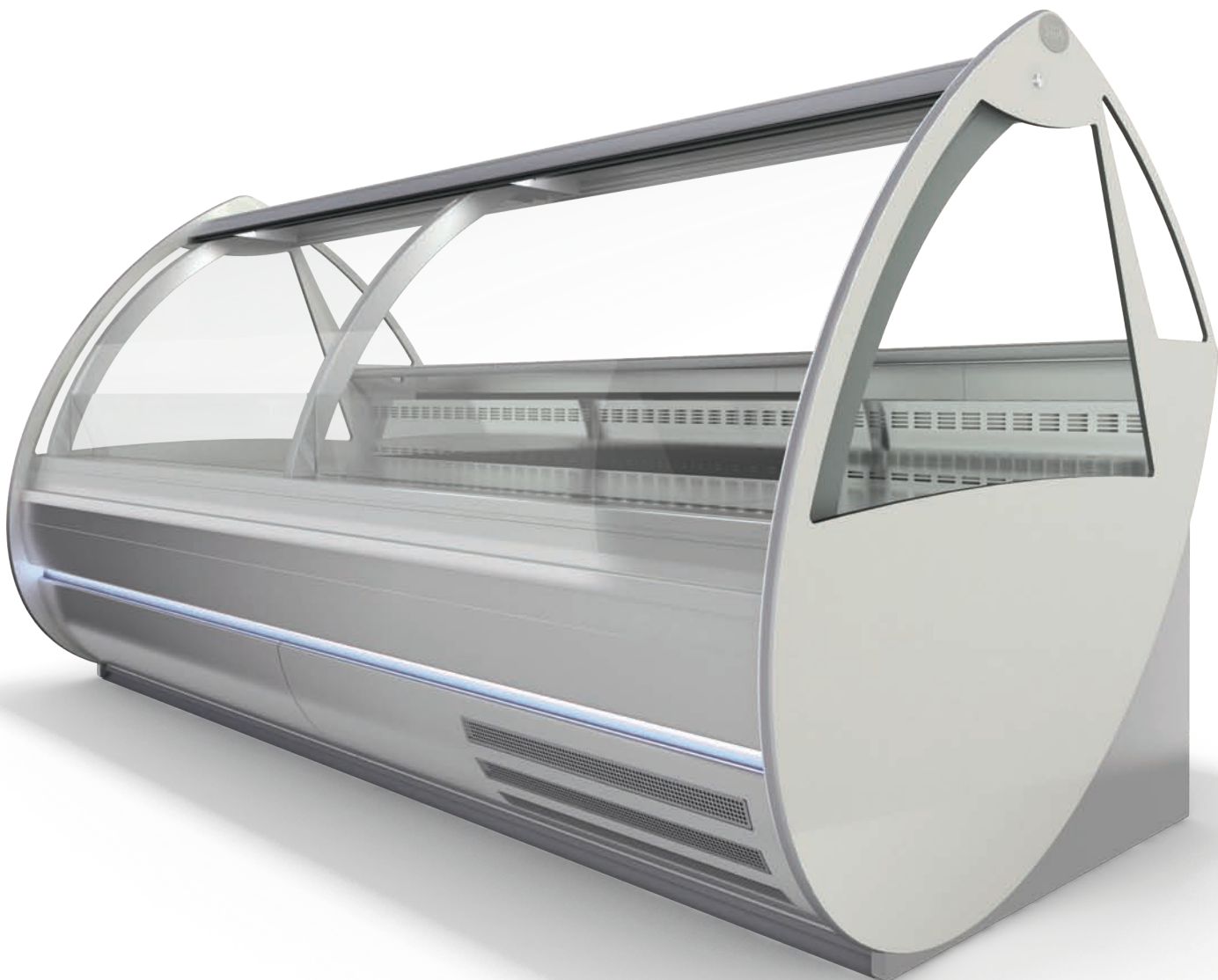


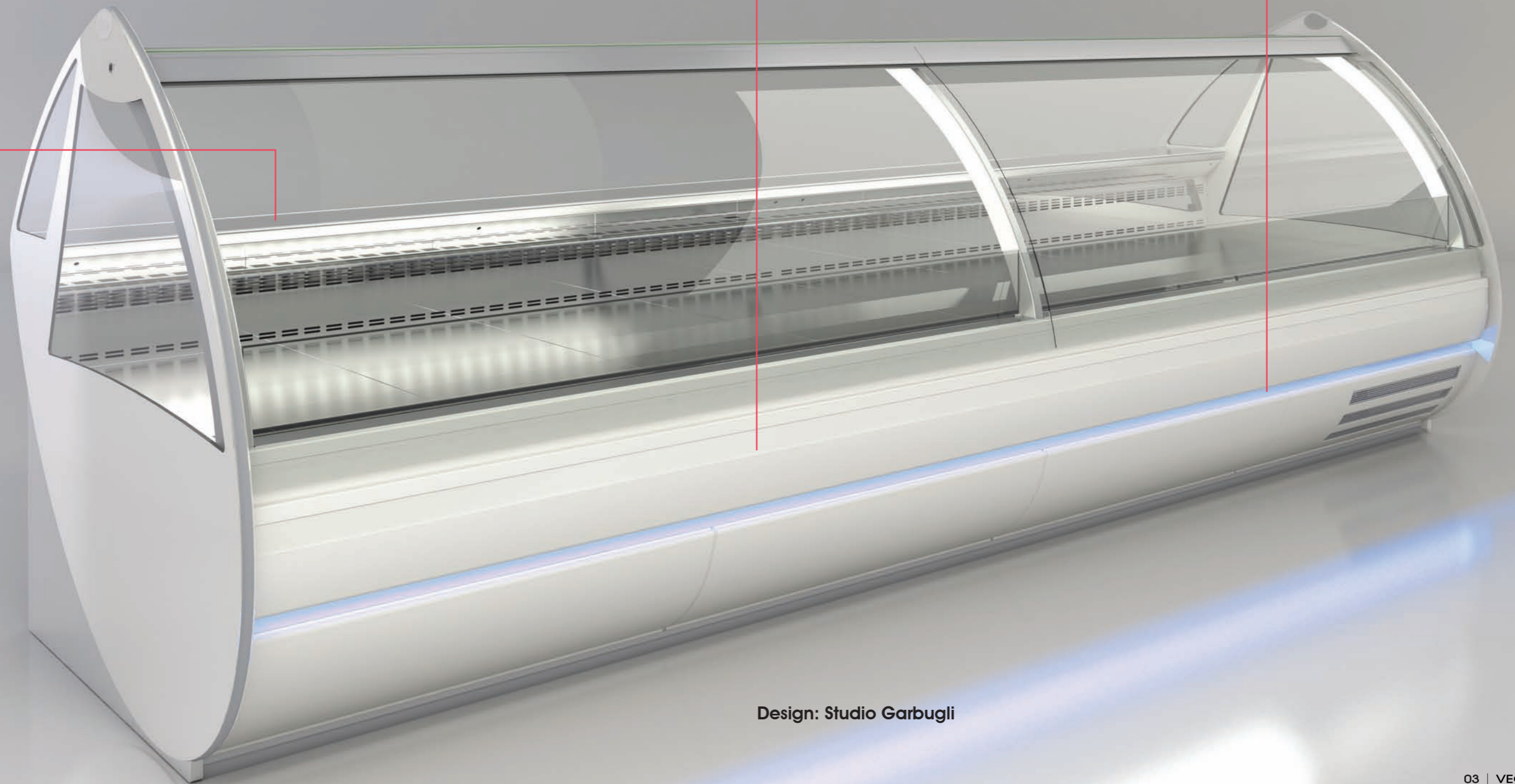
**SIFA**<sup>®</sup> **FOOD**

VEGA



- |   |  |
|---|--|
| <p><b>01.</b></p>  | <p>01. Inox<br/>02. Marmo Nero Assoluto<br/>03. Composto Bianco Zeus</p>   |
| <p><b>04.</b></p>  | <p>01. St. steel<br/>02. Black Marble<br/>03. Bianco Zeus Composite Material</p>   |
| <p><b>07.</b></p>  | <p>01. Edelstahl<br/>02. Vollschwarz Marmor<br/>03. Weiss Zeus Komposit</p> <p>01. Acier inox<br/>02. Marbre Noir Foncé<br/>03. Composé Blanc Zeus</p> <p>01. Acero<br/>02. Marmol Negro Absoluto<br/>03. Compacto Bianco Zeus</p> |

- |   |   |   |   |
|---|---|---|---|
| <p><b>01.</b></p>  | <p><b>04.</b></p>  | <p>01. Bianco RAL 9003 Lucido<br/>02. Rosso RAL 3031 Opaco<br/>03. Blu RAL 5023 Opaco<br/>04. Arancio RAL 1033 Opaco<br/>05. Argento Metallizzato</p> | <p><b>06. Led Bianco</b><br/><b>07. Led Blu</b></p> |
| <p><b>02.</b></p>  | <p><b>05.</b></p>  | <p>01. White RAL 9003 Shiny<br/>02. Red RAL 3031 Matt<br/>03. Blue RAL 5023 Matt<br/>04. Orange RAL 1033 Matt<br/>05. Metallized Silver</p>           | <p>06. White Led<br/>07. Blue Led</p>               |
| <p><b>03.</b></p>  |   | <p>01. Weiß RAL 9003 Glanzend<br/>02. Rot RAL 3031 Matt<br/>03. Blau RAL 5023 Matt<br/>04. Orange RAL 1033 Matt<br/>05. Metallisierte Silber</p>      | <p>06. Weiß Led<br/>07. Blau Led</p>                |
|   |   | <p>01. Blanc RAL 9003 Brillant<br/>02. Rouge RAL 3031 Opaque<br/>03. Bleu RAL 5023 Opaque<br/>04. Orange RAL 1033 Opaque<br/>05. Argent Métallisé</p> | <p>06. Led Blanc<br/>07. Led Bleu</p>               |
|   |   | <p>01. Blanco RAL 9003 Lucido<br/>02. Rojo RAL 3031 Opaco<br/>03. Azul RAL 5023 Opaco<br/>04. Naranja RAL 1033 Opaco<br/>05. Argento Metallizado</p>  | <p>06. Led Blanco<br/>07. Led Azul</p>              |



VEGA, tecnologia evoluta dal design sofisticato

VEGA, evolved technology with sophisticated design

VEGA, entwickelte Technologie mit hochwertigem Design

VEGA, technologie évoluée avec un design sophistiqué

VEGA, tecnologia evoluta con design sofisticado

Design: Studio Garbugli





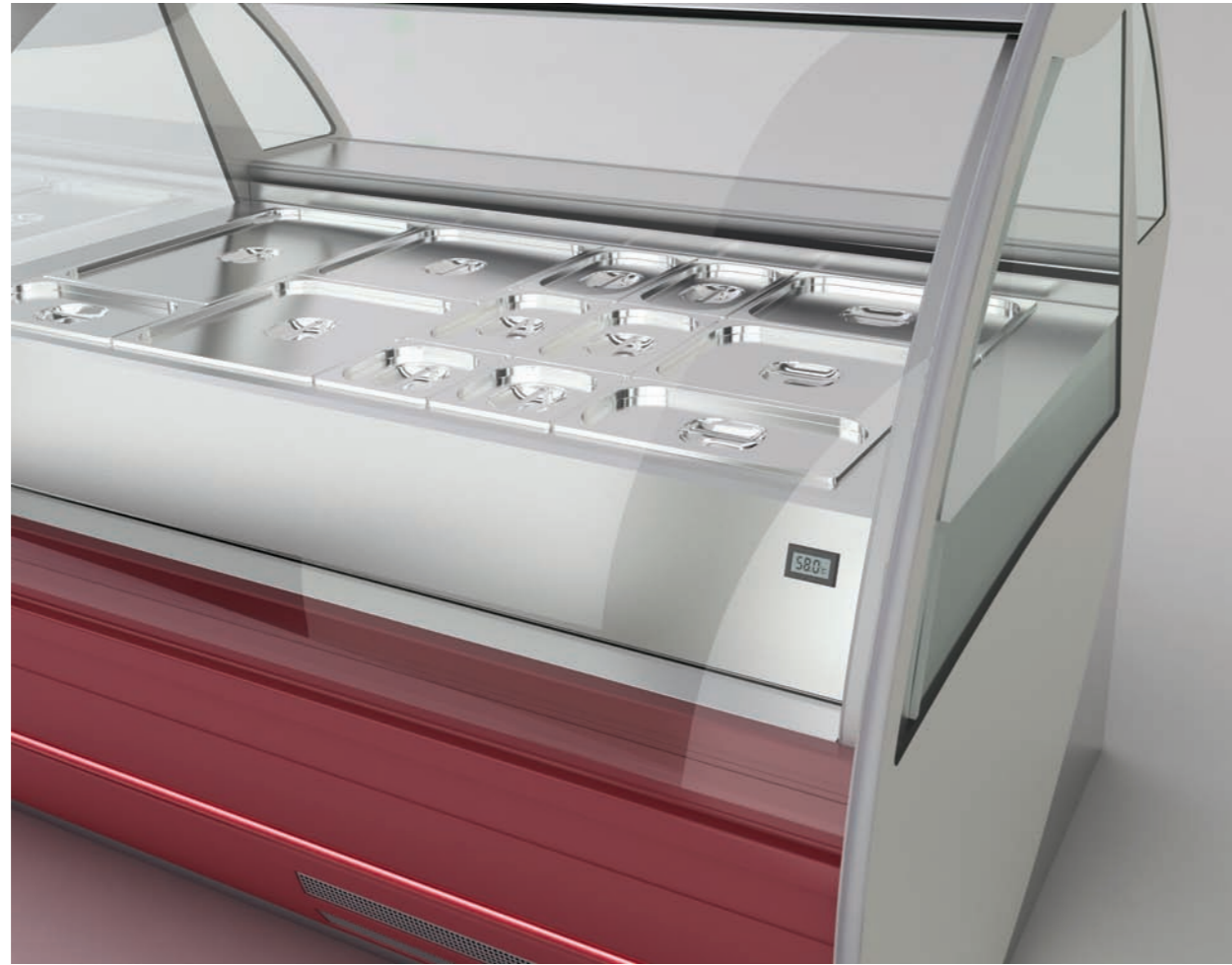
**.1**  
**Modulo gastronomia calda**  
**bagno maria**

Food hot unit bain marie

Food warm bain-marie

Buffet bain-marie chaud

Modulo gastronomia, calentaci3n  
bano de maria



.1

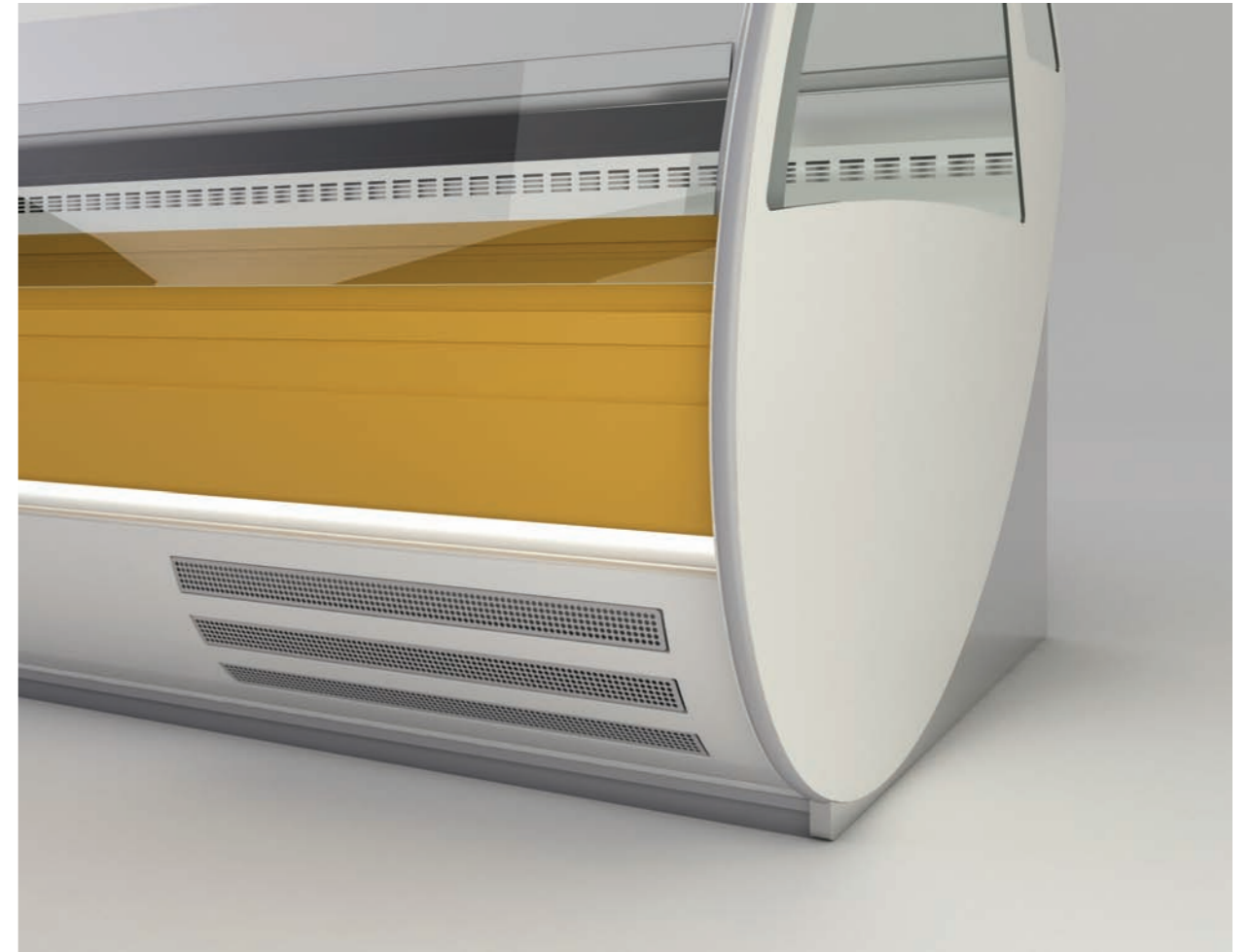
**.3**  
**Pannello in due colori, griglia inferiore**  
**per aerazione gruppo**

Two colours panel, lower grid for group  
ventilation

Zwei-Farben Paneel, untere Gitter für  
Gruppe Lüftung

Panneau en deux couleurs, grille  
inférieure pour ventilation groupe

Panel bicolor, reja inferior para la  
ventilaci3n del motor



.3

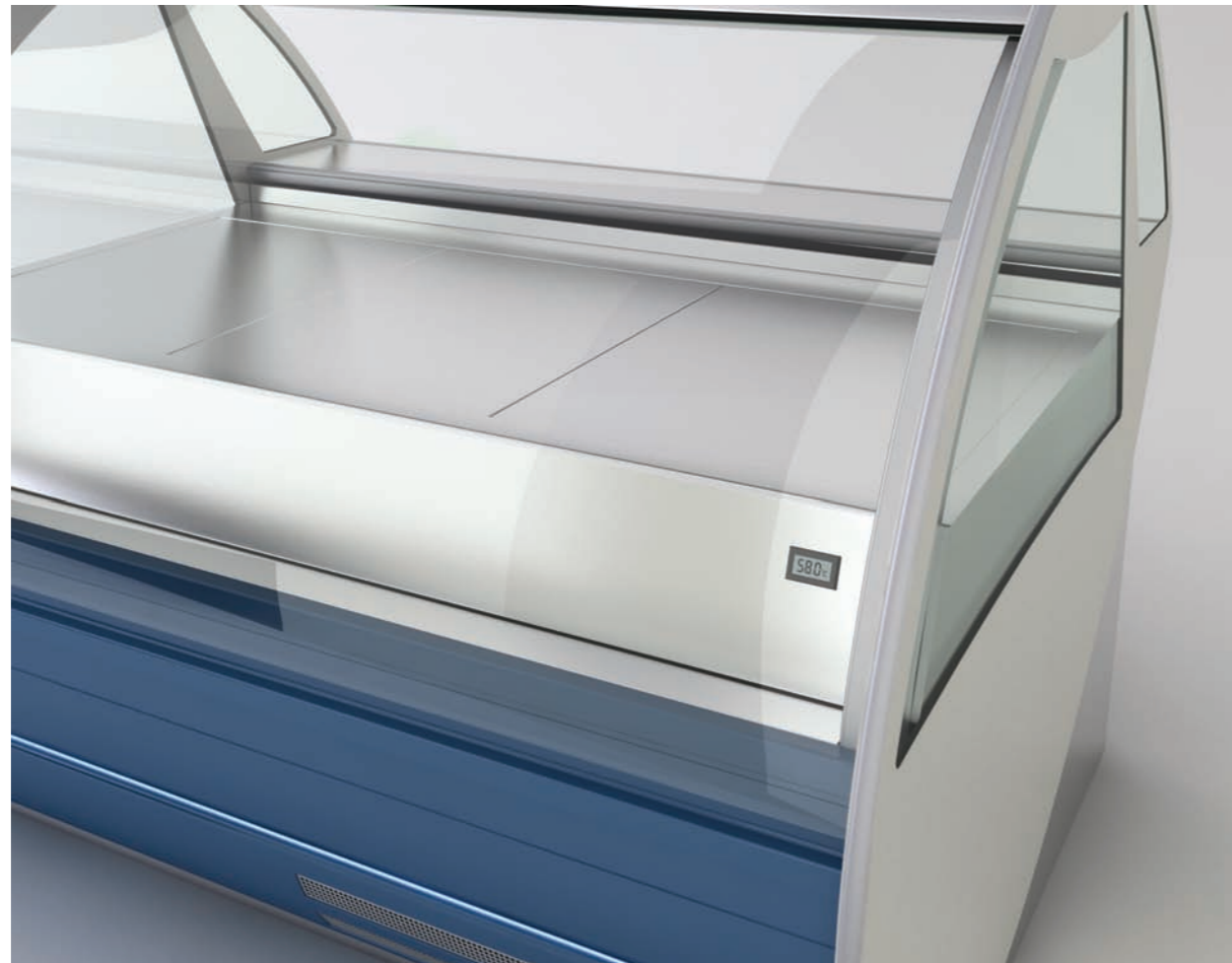
**.2**  
**Modulo gastronomia calda secco**

Food unit dry heated

Food warm trocken

Buffet à sec chaud

Modulo gastronomia calentaci3n seco



.2

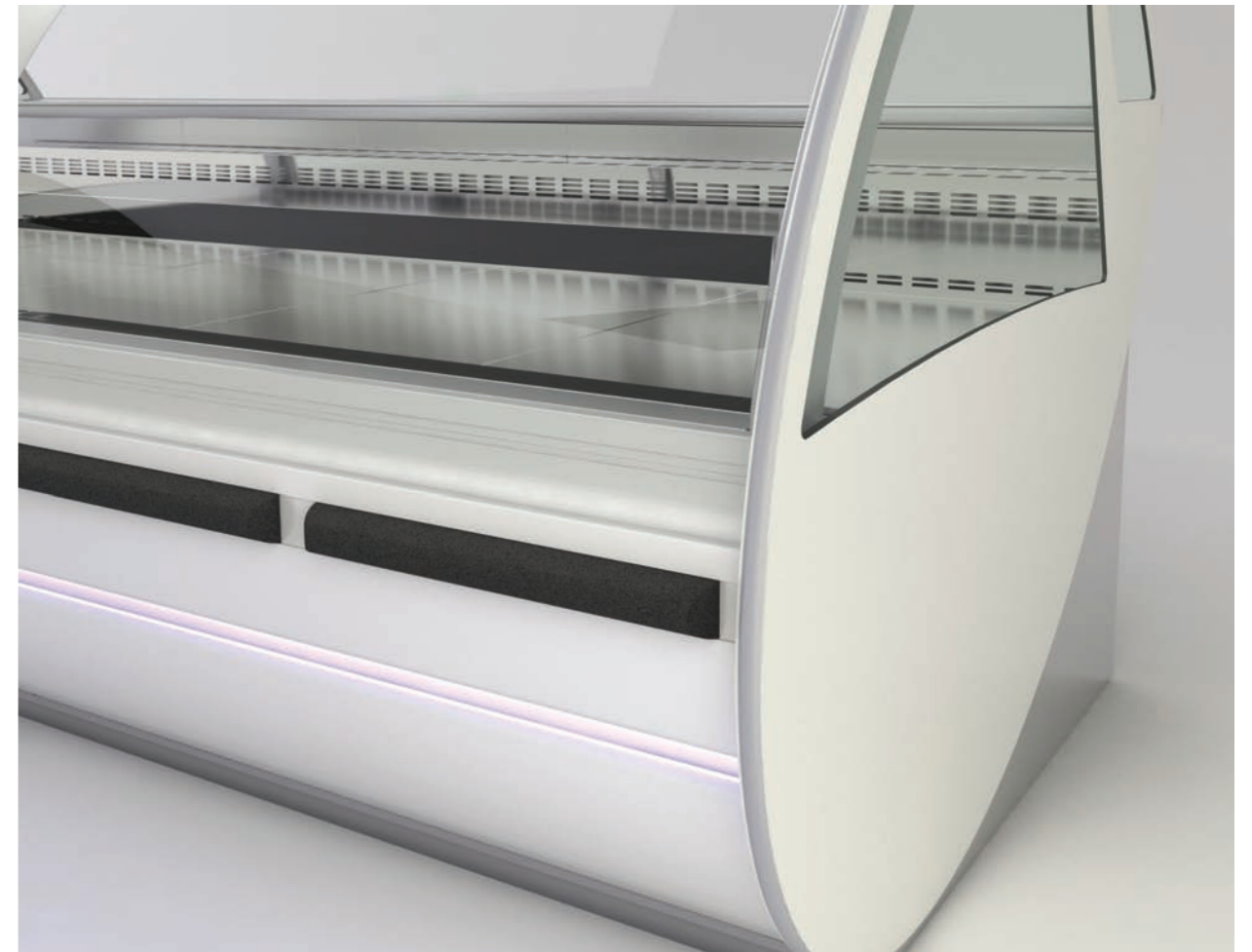
**.4**  
**Pannello con profilo batti carrello**  
**in poliuretano integrale**

Panel with trolley guard profile  
in integral polyurethane

Frontpaneel mit Stoßeinsätzen  
für Einkaufswagen aus vollem Pur

Panneau avec protection anti-caddie  
en polyuréthane intégral

Panel con perfil paragolpe  
en poliuretano integral



.4

**.5**  
**Piano lavoro maggiorato in composto bianco zeus**

Large working top in white zeus composite material

Tiefe Arbeitsplatte aus weiß zeus Komposit

Plan de travail plus profonde en composé blanc zeus

Encimera mas ancha compacto blanco zeus



.5

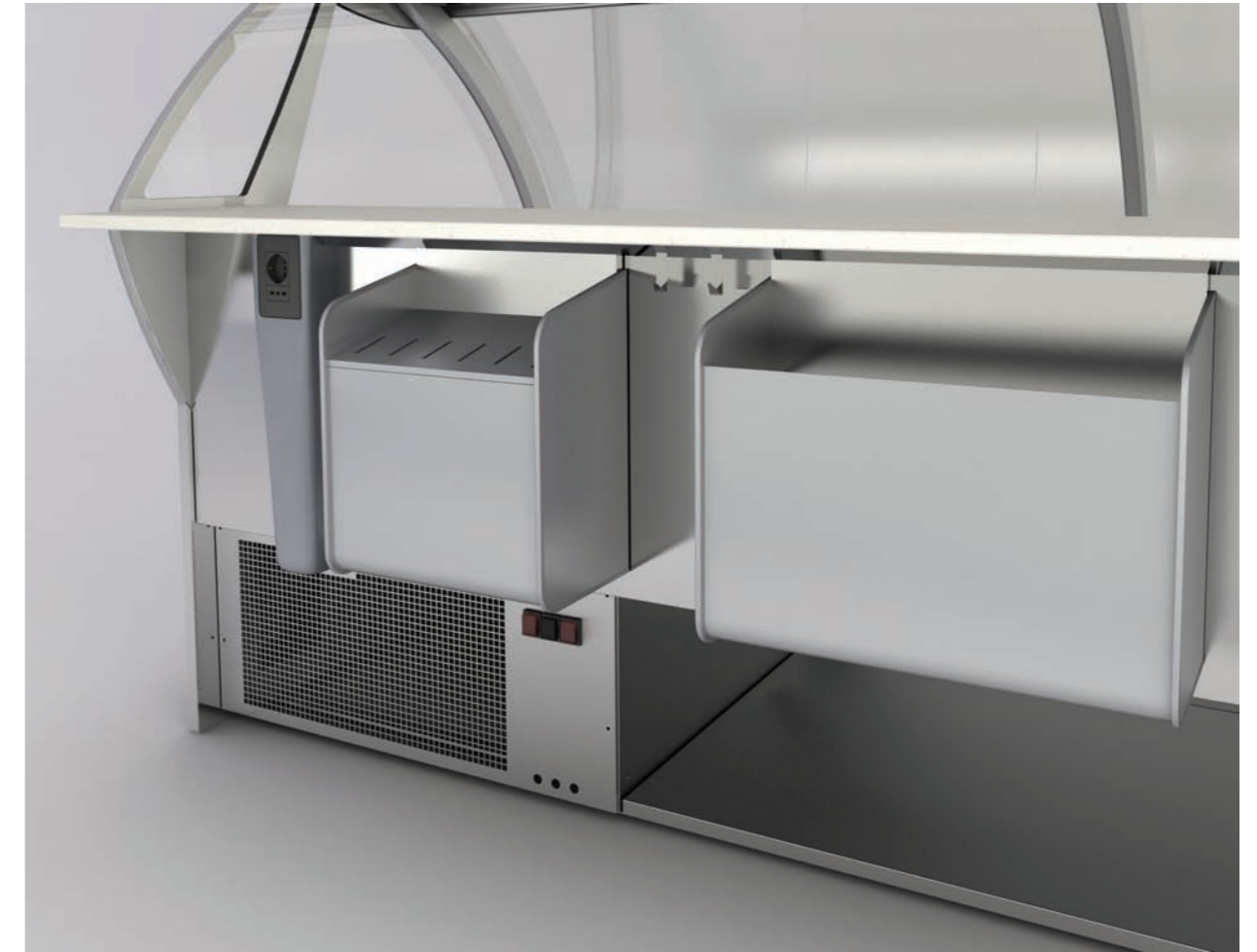
**.7**  
**Accessorio porta coltelli**

Additional knives block

Option Messerhalter

Option porte-couteaux

Accesorio portacuchillos



.7

**.6**  
**Accessorio porta vaschette e porta rotolo**

Additional tanks holder and roll holder

Option Wannen-rollenhalter

Option porte-bacs-rouleau

Accesorio portapilas y portarollo



.6

**.8**  
**Doccetta per lavaggio banco (evaporatore sollevabile con pistoncini idraulici)**

Shower head for cabinet washing (lifting evaporator by hydraulic pistons)

Brause für Wannenreinigung (Verdampferplatte mittels Kolben anhebbar)

Douchette pour nettoyage cuvé (plan de l'évaporateur soulevable par pistons hydrauliques)

Ducha para lavadura banco (evaporator levantable con pistones hidraulicos)



.8



SIFA FOOD è una divisione di:  
SIFA Società Industria Frigoriferi e Arredamenti S.p.A  
61022 Colbordolo (PU) - Italy - Via Nazionale 15-19  
tel. +39.0721.4741 - fax. +39.0721.497507  
e-mail: [info@sifaspa.it](mailto:info@sifaspa.it)  
[www.sifaspa.it](http://www.sifaspa.it)

